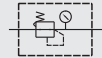


Specification

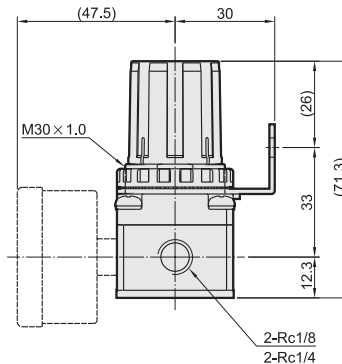
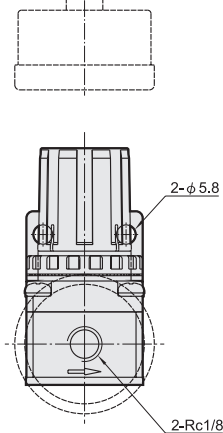
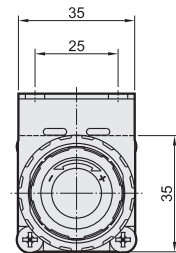
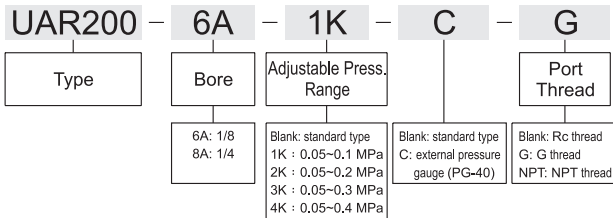
| Model | UAR200 | |
|--------------------------|------------------------|------------|
| Bore No. | 6A | 8A |
| Port size | PT(Rc) 1/8 | PT(Rc) 1/4 |
| Medium | Air | |
| Operating pressure range | 0.05~1 MPa | |
| Proof pressure | 1.5 MPa | |
| Regulated pressure range | 0.05~0.85 MPa | |
| Ambient temperature | -5~+60°C (No freezing) | |
| Filter element | Bracket | |
| Attachment | Pressure gauge (PG-40) | |
| Weight | 190g | |



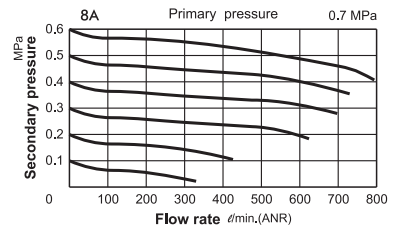
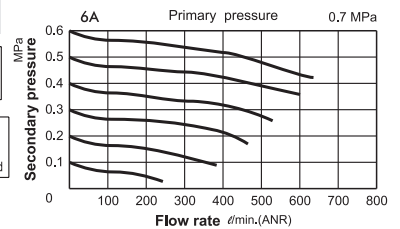
Symbol



How to order



Flow features:

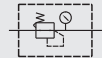


Specification

| Model | UAR300 | |
|--------------------------|------------------------|--------------------|
| Bore No. | 8A | 10A |
| Port size | PT(Rc) 1/4 | PT(Rc) 3/8 |
| Medium | Air | |
| Operating pressure range | 0.05~1 MPa | |
| Proof pressure | 1.5 MPa | |
| Regulated pressure range | 32 mm ² | 34 mm ² |
| Effective orifice | 0.05~0.85 MPa | |
| Ambient temperature | -5~+60°C (No freezing) | |
| Filter element | Bracket | |
| Attachment | Pressure gauge (PG-40) | |
| Weight | 250g | |



Symbol



UVSC

UACP

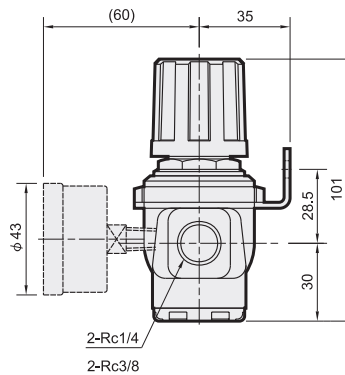
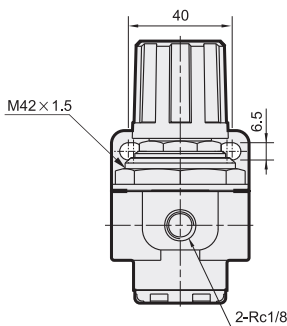
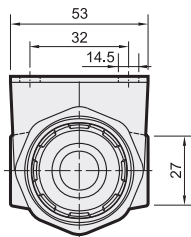
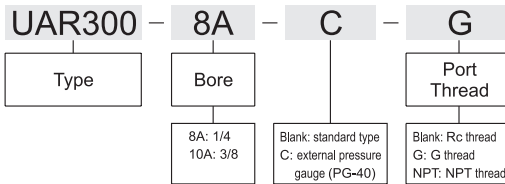
UAFR

UAR

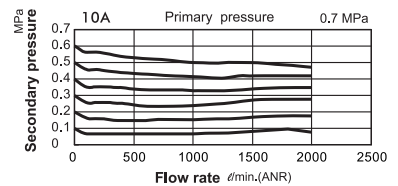
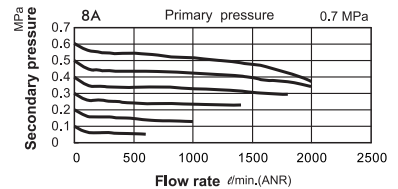
ADV
FMRF

MP
PG

How to order



Flow features:



Specification

| Model | UAR302 | | |
|--------------------------|---------------------------------|--------------------|------------|
| Bore No. | 8A | 10A | 15A |
| Port size | PT(Rc) 1/4 | PT(Rc) 3/8 | PT(Rc) 1/2 |
| Medium | Air | | |
| Operating pressure range | 0.05~1 MPa | | |
| Proof pressure | 1.5 MPa | | |
| Effective orifice | 32 mm ² | 34 mm ² | |
| Regulated pressure range | 0.05~0.85 MPa | | |
| Ambient temperature | -5~+60°C (No freezing) | | |
| Attachment | Pressure gauge (PG-20), bracket | | |
| Weight | 270g | | |

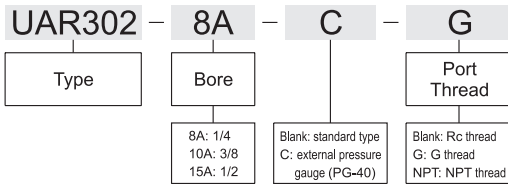


Option: MP41

Symbol

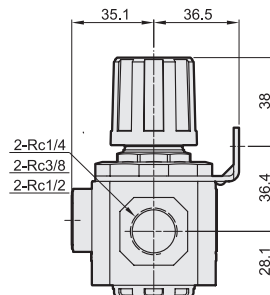
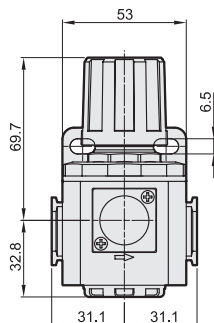
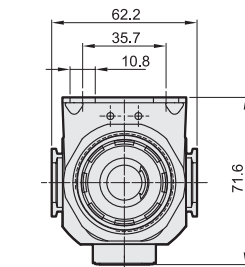
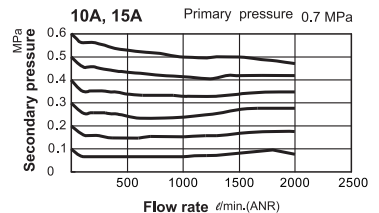
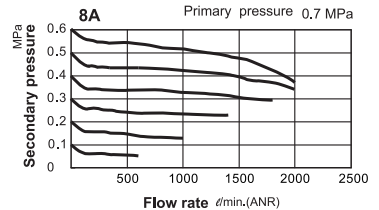


How to order



※Refer to page P-1.1 for the option of digital pressure switch MP41.

Flow features:



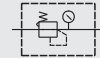
Specification

| | | | |
|--------------------------|---------------------------------|------------|------------|
| Model | UAR401 | | |
| Bore No. | 8A | 10A | 15A |
| Port size | PT(Rc) 1/4 | PT(Rc) 3/8 | PT(Rc) 1/2 |
| Medium | Air | | |
| Max. Operating pressure | 1.5 MPa | | |
| Proof pressure | 2.0 MPa | | |
| Regulated pressure range | Standard type: 0.1~0.85 MPa | | |
| | High pressure type: 0.1~1.5 MPa | | |
| Ambient temperature | -5~+60°C (No freezing) | | |
| Attachment | Pressure gauge (PG-20), bracket | | |
| Weight | 450g | | |



Option: MP41

Symbol



UVSC

UACP

UAFR

UAR

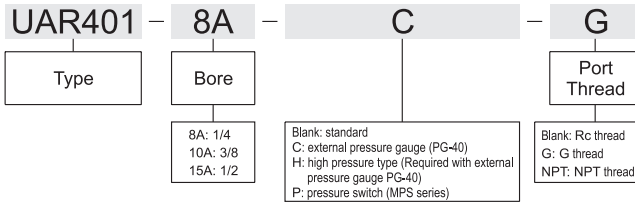
ADV

FMRF

MP

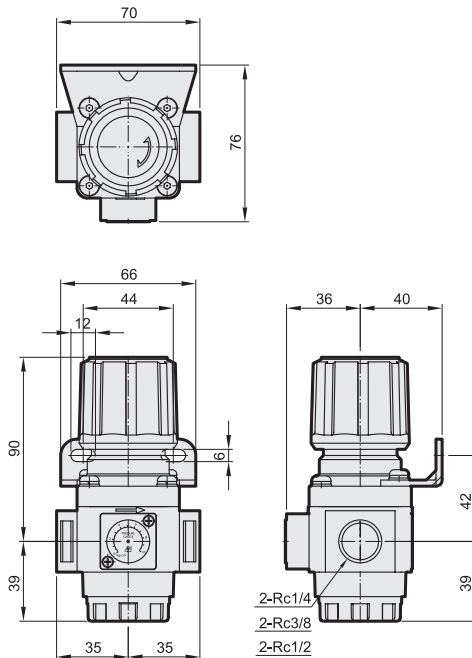
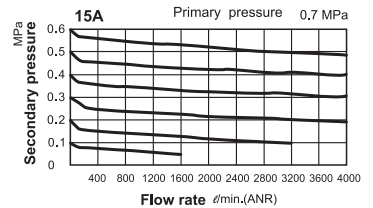
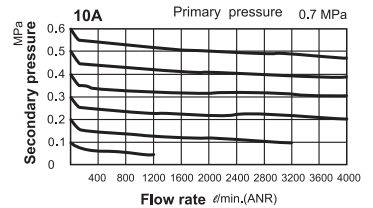
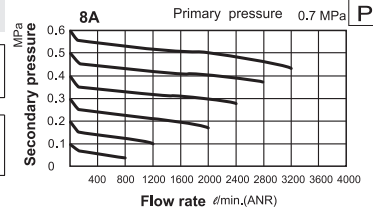
PG

How to order



※Refer to page P-1.1 for the option of digital pressure switch MP41.

Flow features:



Specification

| Model | UAR403 | | |
|--------------------------|---------------------------------|------------|------------|
| Bore No. | 8A | 10A | 15A |
| Port size | PT(Rc) 1/4 | PT(Rc) 3/8 | PT(Rc) 1/2 |
| Medium | Air | | |
| Max. Operating pressure | 1 MPa | | |
| Proof pressure | 1.5 MPa | | |
| Regulated pressure range | 0.1~0.85 MPa | | |
| Ambient temperature | -5~+60°C (No freezing) | | |
| Attachment | Pressure gauge (PG-20), bracket | | |
| Weight | 450g | | |

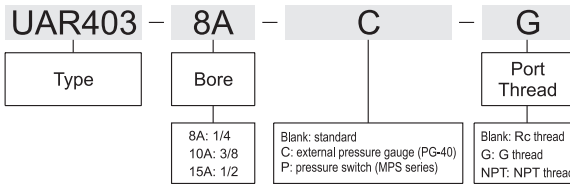


Option: MP41

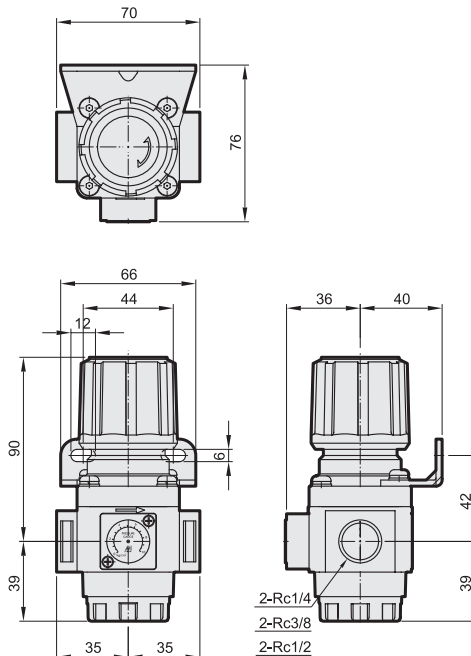
Symbol



How to order



※Refer to page P-1.1 for the option of digital pressure switch MP41.



Flow features:

