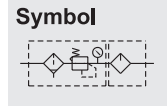


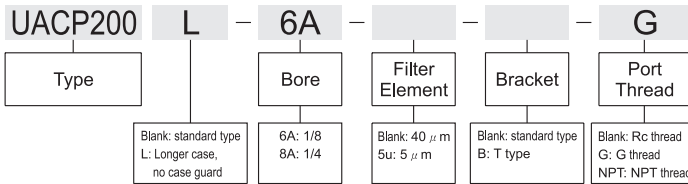
## Specification

Model	UACP200	
Bore No.	6A	8A
Port size	PT(Rc) 1/8	PT(Rc) 1/4
Medium	Air	
Operating pressure range	0.05~1 MPa	
Proof pressure	1.5 MPa	
Regulated pressure range	0.05~0.85 MPa	
Ambient temperature	-5~+60°C (No freezing)	
Filter element	Standard: 40 $\mu$ m Option: 5 $\mu$ m	
Lubricating oil capacity	20c.c, 35c.c (UACP200L)	
Min. flow for oil drip	35 $\ell$ /min	50 $\ell$ /min
Recommended lubricating oil	Turbine oil ISO-VG32	
Attachment	Pressure gauge (PG-40), bracket	
Weight	432g, 380g (UACP200L)	

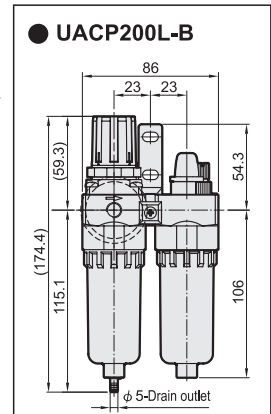
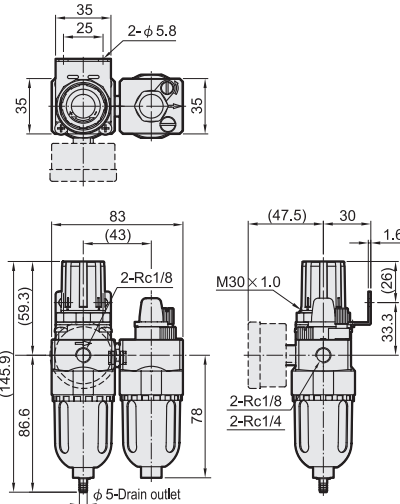
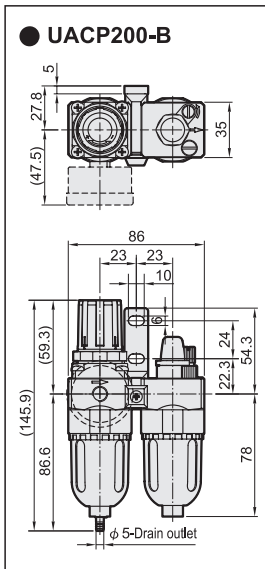
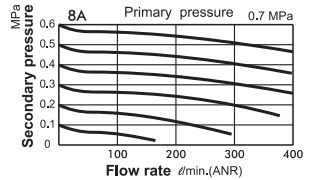
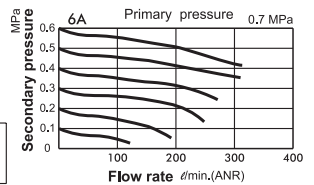
※ Standard unit contains semi-auto-drain function when operating pressure below 0.05 MPa.



## How to order



## Flow features:



# UACP300 Air Units (F.R.L.unit)

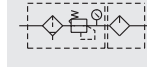
## Specification

Model	UACP300	
Bore No.	8A	10A
Port size	PT(Rc) 1/4	PT(Rc) 3/8
Medium	Air	
Operating pressure range	0.05~1 MPa	
Proof pressure	1.5 MPa	
Regulated pressure range	0.05~0.85 MPa	
Ambient temperature	-5~+60°C (No freezing)	
Filter element	Standard: 5 μm Option: 40 μm	
Lubricating oil capacity	55c.c	
Min. flow for oil drip	50 l/min	60 l/min
Recommended lubricating oil	Turbine oil ISO-VG32	
Attachment	Pressure gauge (PG-40), T-type bracket	
Weight	724g	

※ Standard unit contains semi-auto-drain function when operating pressure below 0.05 MPa.



### Symbol



UVSC

UACP

UAFR

UAR

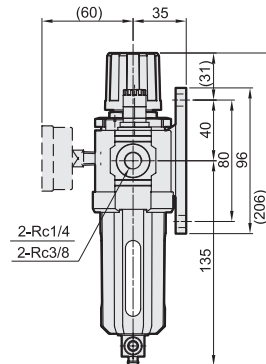
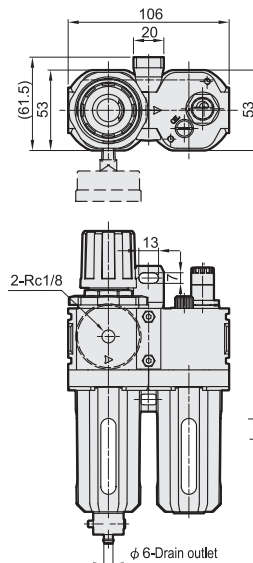
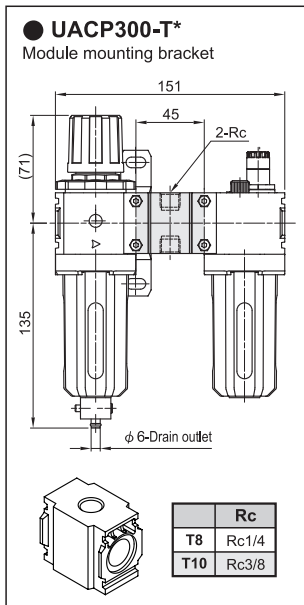
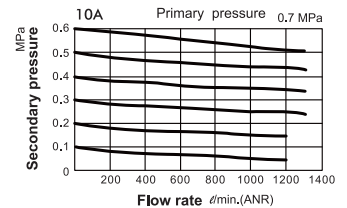
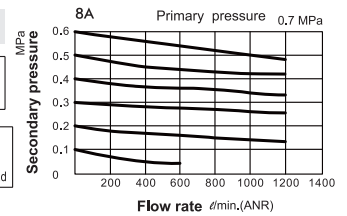
ADV  
FMRF

MP  
PG

## How to order

<b>UACP300</b>	<b>8A</b>			<b>T8</b>	<b>G</b>
Type	Bore		Filter Element	Module mounting bracket	Port Thread
	8A : 1/4 10A : 3/8	D: auto drain valve (ADV300)	Blank: 5 μm 40u: 40 μm	T8 : 1/4 T10 : 3/8	Blank: Rc thread G: G thread NPT: NPT thread

## Flow features:



### Specification

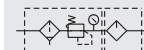
Model	UACP300L	
Bore No.	8A	10A
Port size	PT(Rc) 1/4	PT(Rc) 3/8
Medium	Air	
Operating pressure range	0.05~1 MPa	
Proof pressure	1.5 MPa	
Regulated pressure range	0.05~0.85 MPa	
Ambient temperature	-5~+60°C (No freezing)	
Filter element	Standard: 5 μm Option: 40 μm	
Lubricating oil capacity	65c.c	
Min. flow for oil drip	50 l/min	60 l/min
Recommended lubricating oil	Turbine oil ISO-VG32	
Attachment	Pressure gauge (PG-40), T-type bracket	
Weight	739g	

※1. Standard unit contains semi-auto-drain function when operating pressure below 0.05 MPa.

※2. Choose auto-drain FMRF300, the pressure range is 0.15 ~ 1 MPa.



### Symbol

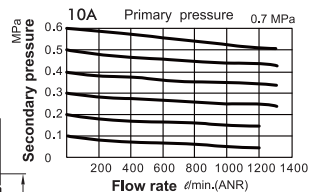
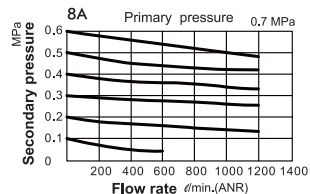


- Longer case for adapting high efficient auto drain valve.

### How to order

UACP300L	8A			T8	G
Type	Bore		Filter Element	Module mounting bracket	Port Thread
	8A : 1/4 10A : 3/8	D: auto drain valve (FMRF300)	Blank: 5 μm 40μ: 40 μm	T8 : 1/4 T10 : 3/8	Blank: Rc thread G: G thread NPT: NPT thread

### Flow features:



● **UACP300L-T\***  
Module mounting bracket

● **UACP300L-D**  
Auto drain valve

	Rc
T8	Rc1/4
T10	Rc3/8

## Specification

Model	UACP302		
Bore No.	8A	10A	15A
Port size	PT(Rc) 1/4	PT(Rc) 3/8	PT(Rc) 1/2
Medium	Air		
Operating pressure range	0.05~1 MPa		
Proof pressure	1.5 MPa		
Regulated pressure range	0.05~0.85 MPa		
Ambient temperature	-5~+60°C (No freezing)		
Filter element	Standard: 5 μm Option: 40 μm		
Lubricating oil capacity	65c.c		
Min. flow for oil drip	50 ℓ/min	60 ℓ/min	
Recommended lubricating oil	Turbine oil ISO-VG32		
Attachment	Pressure gauge (PG-20), T-type bracket		
Weight	845g		

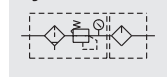
※1. Standard unit contains semi-auto-drain function when operating pressure below 0.05 MPa.

※2. Choose auto-drain FMRF300, the pressure range is 0.15 ~ 1 MPa.



Option: MP41

### Symbol



UVSC

UACP

UAFR

UAR

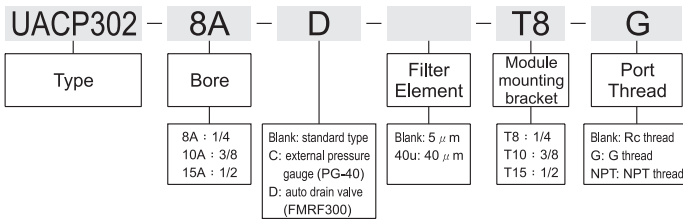
ADV

FMRF

MP

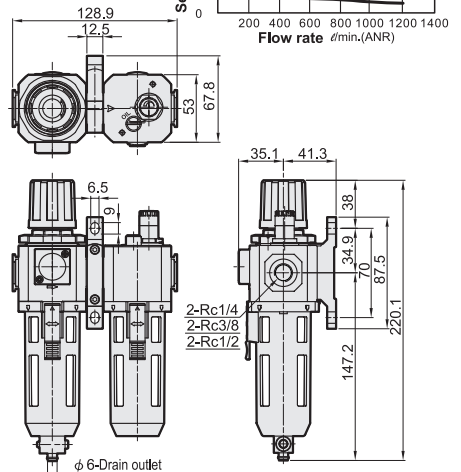
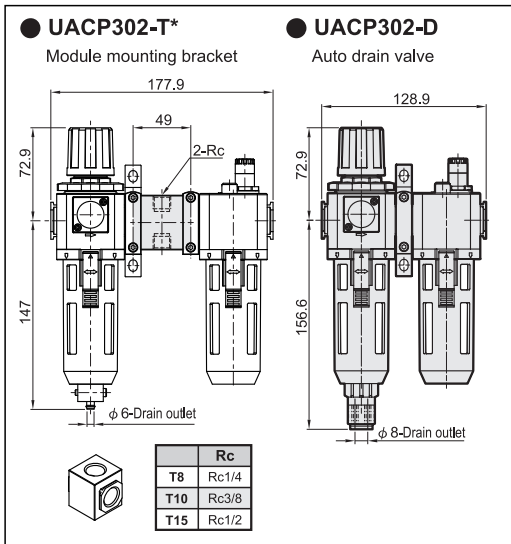
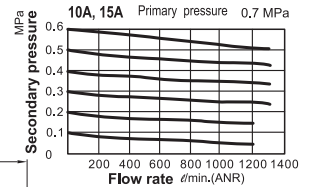
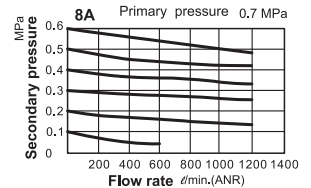
PG

## How to order



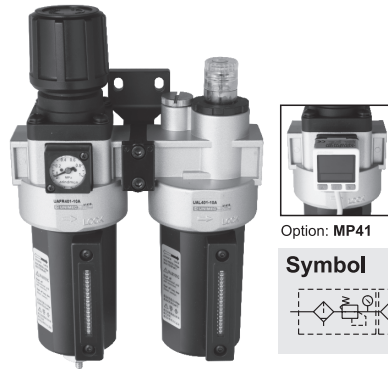
※Refer to page P-1.1 for the option of digital pressure switch MP41.

## Flow features:



## Specification

Model	UACP401		
Bore No.	8A	10A	15A
Port size	PT(Rc) 1/4	PT(Rc) 3/8	PT(Rc) 1/2
Medium	Air		
Regulated pressure range	Standard type: 0.1~0.85 MPa		
	High pressure type: 0.1~1.5 MPa		
Proof pressure	2.0 MPa		
Operating pressure range	0.05~1.5 MPa		
Ambient temperature	-5~+60°C (No freezing)		
Filter element	Standard: 40 μm Option: 5 μm		
Lubricating oil capacity	200c.c		
Min. flow for oil drip	30 ℓ/min	65 ℓ/min	80 ℓ/min
Recommended lubricating oil	Turbine oil ISO-VG32		
Attachment	Pressure gauge (PG-20), T-type bracket		
Weight	1518g		



Option: MP41

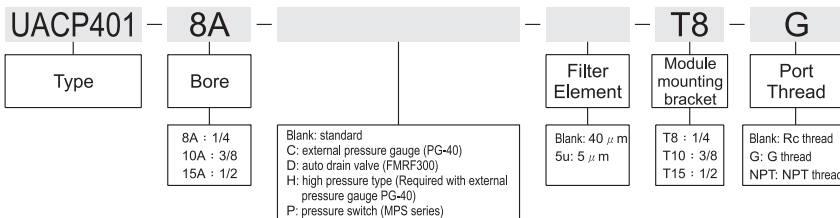
### Symbol



※1. Standard unit contains semi-auto-drain function when operating pressure below 0.05 MPa.

※2. Choose auto-drain FMRF300, the pressure range is 0.15 ~ 1 MPa.

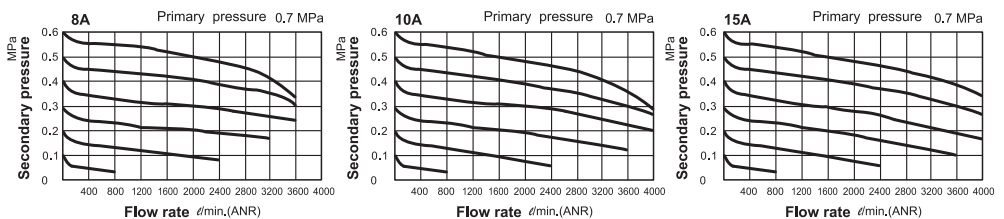
## How to order

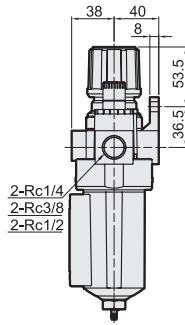
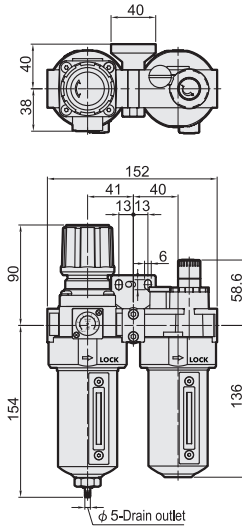


※1. H type not available with auto-drain (FMRF300).

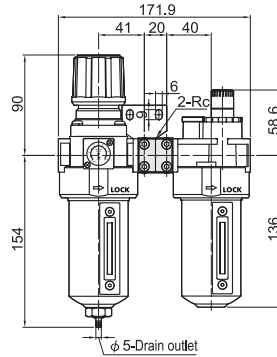
※2. Refer to page P-1.1 for the option of digital pressure switch MP41.

## Flow features:



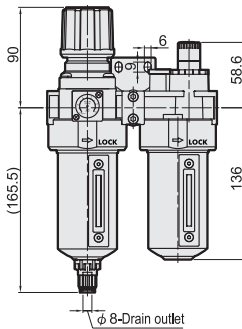


● UACP401-T\*

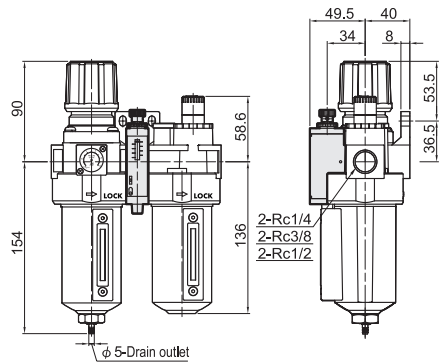


	Rc
T8	Rc1/4
T10	Rc3/8
T15	Rc1/2

● UACP401-D



● UACP401-P MPS Series pneumatic pressure switch



UVSC

UACP

UAFR

UAR

ADV  
FMRF

MP  
PG

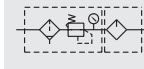
## Specification

Model	UACP403		
Bore No.	8A	10A	15A
Port size	PT(Rc) 1/4	PT(Rc) 3/8	PT(Rc) 1/2
Medium	Air		
Operating pressure range	0.05~1 MPa		
Proof pressure	1.5 MPa		
Regulated pressure range	0.1~0.85 MPa		
Ambient temperature	-5~+60°C (No freezing)		
Filter element	Standard: 40 μm Option: 5 μm		
Lubricating oil capacity	140c.c		
Min. flow for oil drip	30 ℓ/min	65 ℓ/min	80 ℓ/min
Recommended lubricating oil	Turbine oil ISO-VG32		
Attachment	Pressure gauge (PG-20), T-type bracket		
Weight	1100g		



Option: MP41

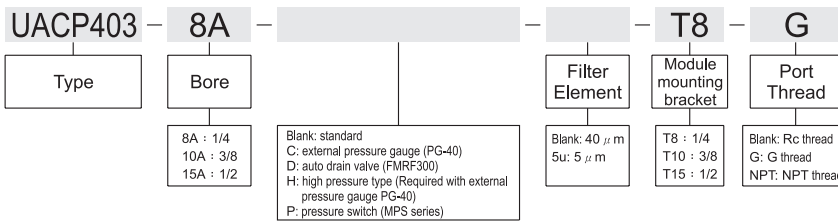
### Symbol



※1. Standard unit contains semi-auto-drain function when operating pressure below 0.05 MPa.

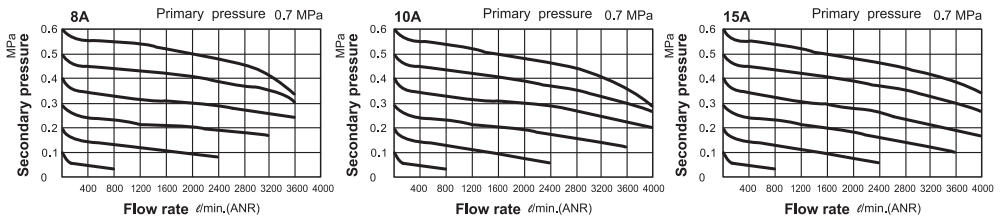
※2. Choose auto-drain FMRF300, the pressure range is 0.15 ~ 1 MPa.

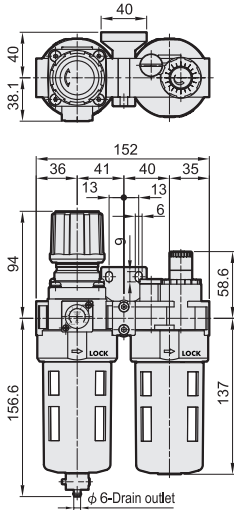
## How to order



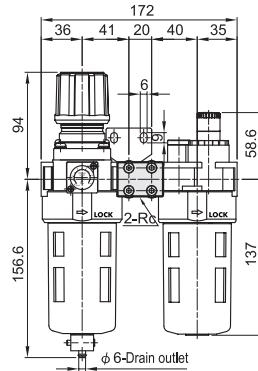
※:Refer to page P-1.1 for the option of digital pressure switch MP41.

## Flow features:





## ● UACP403-T\*



UVSC

UACP

UAFR

UAR

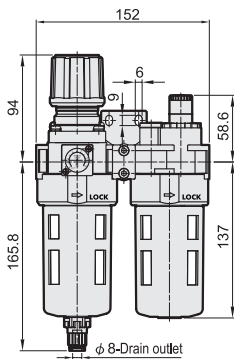
ADV  
FMRF

MP  
PG

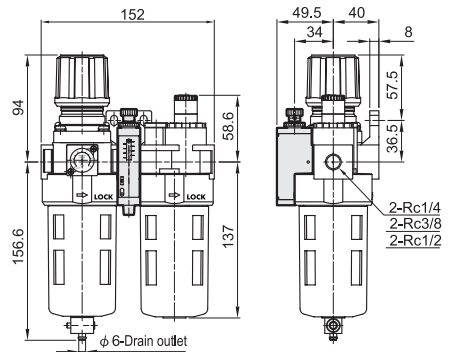


	Rc
T8	Rc1/4
T10	Rc3/8
T15	Rc1/2

## ● UACP403-D



## ● UACP403-P MPS Series pneumatic pressure switch





# ADV300/FMRF300

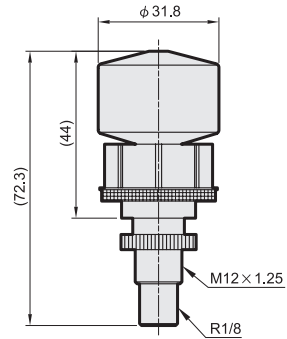
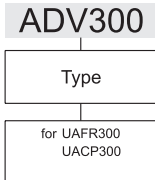
Auto Drain Valves



## Specification

Model	<b>ADV300</b>
Operating pressure range	1.5 MPa
Proof pressure	0.1~0.99 MPa
Ambient temperature	-5~+60°C (No freezing)

## How to order



● for Air Unit, ordered with filter together.

UVSC

UACP

UAFR

UAR

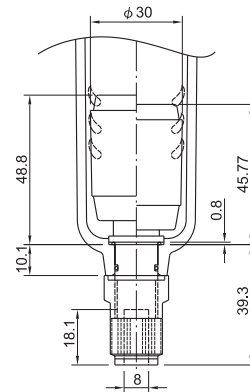
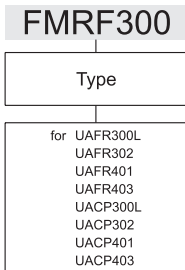
ADV  
FMRF

MP  
PG

## Specification

Model	<b>FMRF300</b>
Operating pressure range	1.5 MPa
Proof pressure	0.15~0.99 MPa
Ambient temperature	-5~+60°C (No freezing)

## How to order



● for Air Unit, ordered with filter together.