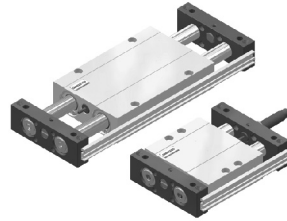


## Slide cylinders

### GMB

Oiless Bearing Type

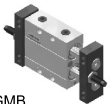



- Piston with magnet is standard accessory in the GM series cylinders.
- This cylinder is of two-axle mode with double thrust force and smooth and precise operation.

## Specification

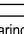
Type	GMB				
Bore sizes of cylinder (mm)	φ 10	φ 16	φ 20	φ 25	φ 32
Standard stroke (mm)	25, 50, 75, 100, 125, 150				
Type of operation	Double acting				
Power fluid	Filtered air with or without lubrication				
The range of pressure (MPa)	0.2~0.7				
Proof pressure	1.03(10.3Kgf/cm <sup>2</sup> )				
The range of temperature (°C)	-10°C~+60°C				
The range of speed (mm/sec)	30~500				

## How to order

<b>GMB</b>	<b>25</b>	<b>100</b>	<b>P</b>	<b>LN09D</b>	<b>2</b>
Type	Bore	Stroke	Sensor holder	Sensor switch	Quantity
	10—φ 10mm 16—φ 16mm 20—φ 20mm 25—φ 25mm 32—φ 32mm	25-25mm 50-50mm 75-75mm 100-100mm 125-125mm 150-150mm	P : Sensor holder		1: 1pc 2: 2pcs

Note:  
1.Can choose NPN or PNP type (3-Wire type, 24VDC).  
2.Can choose plug-in cable.  
3.For details see page 4-1.5.

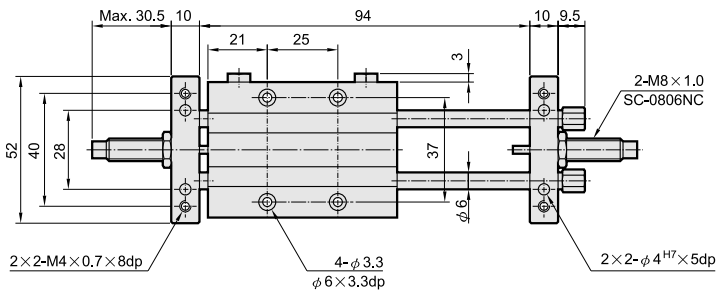
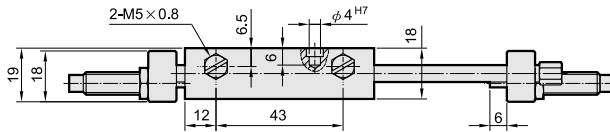
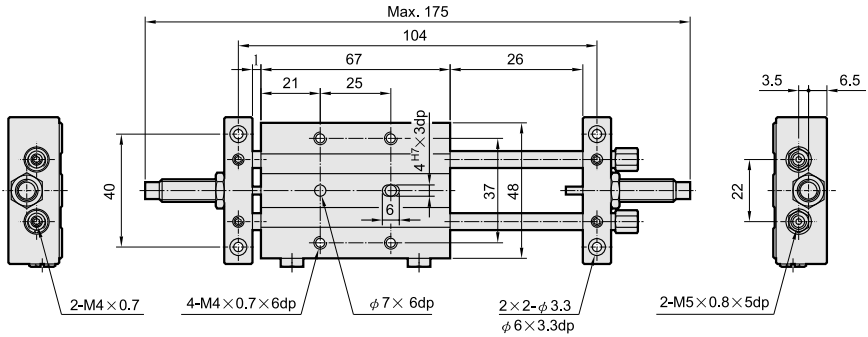
## Cylinder bore and stroke

Type	Bore	Standard stroke					
		25	50	75	100	125	150
GMB  Oiless Bearing Type	φ 10	●	●	●	●	-	-
	φ 16	●	●	●	●	●	●
	φ 20	●	●	●	●	●	●
	φ 25	●	●	●	●	●	●
	φ 32	●	●	●	●	●	●

## Dimensional features

● **GMB TYPE**

Type φ 10×25



DA

DP

DS

DQ

DB

DN

BN

ST

NT

DU

DJ

TA

GP

GS

**GM**

GT

RT

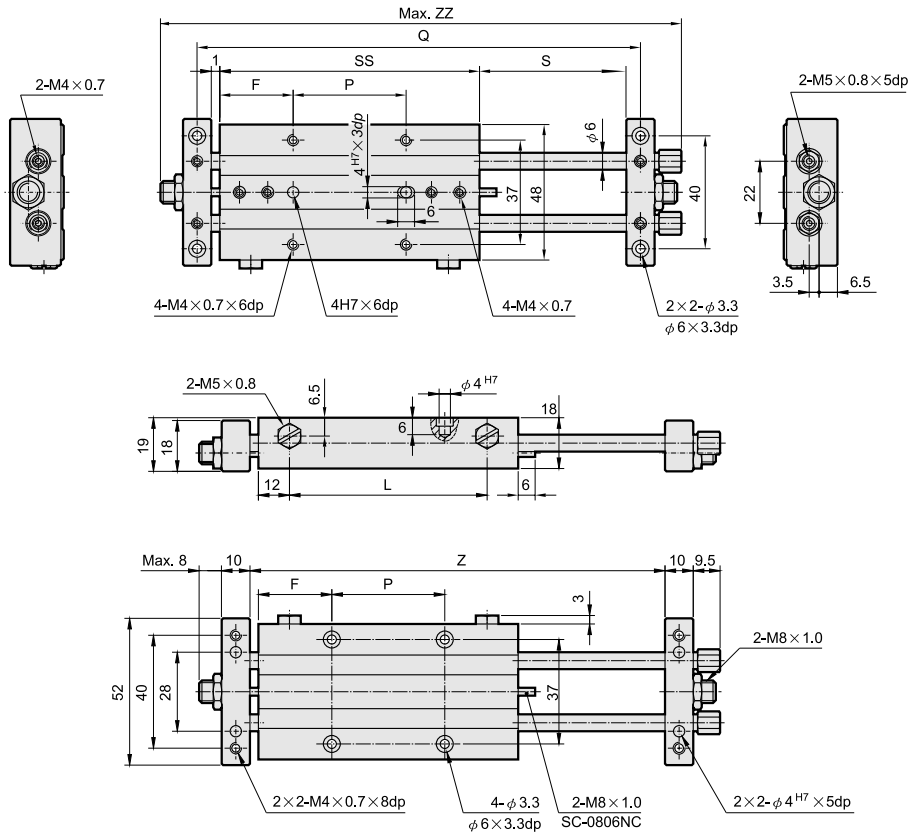
CT

CH

## Dimensional features

● **GMB TYPE**

Type φ 10×50 ~ 100



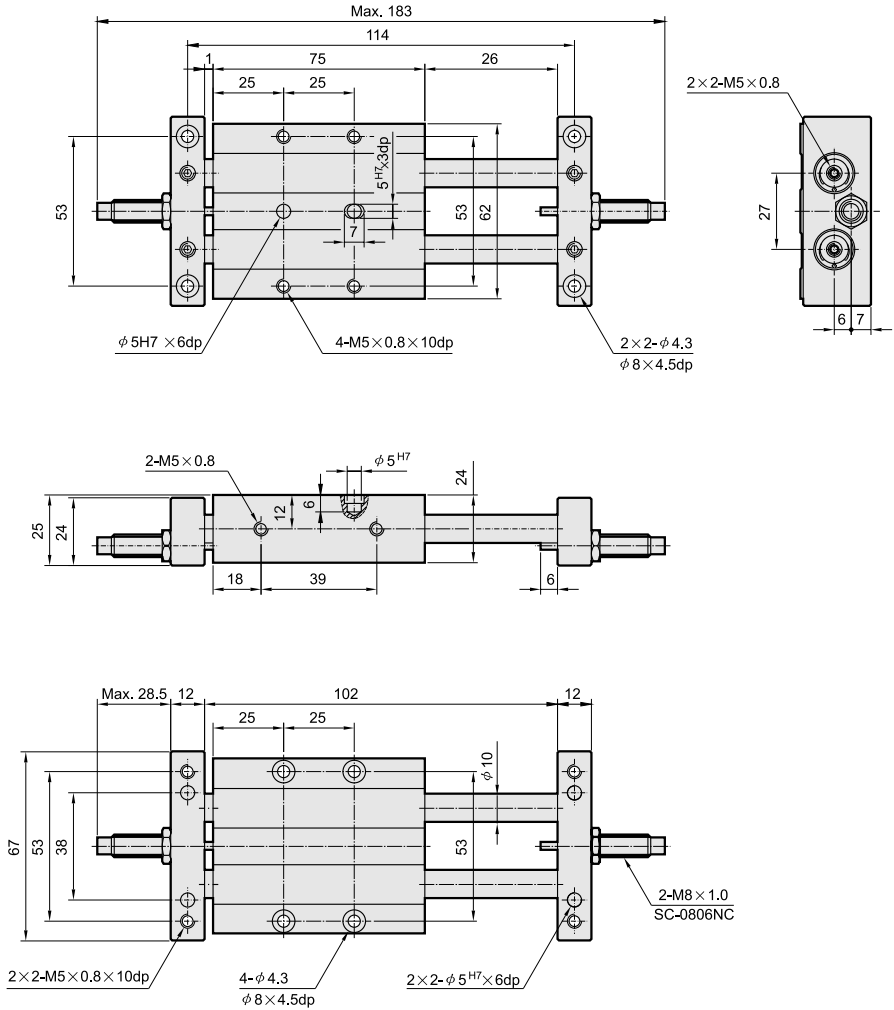
## Dimensional Table

Type	F	L	P	Q	S	SS	Z	ZZ
φ 10×50	26	68	40	154	51	92	144	181.5
φ 10×75	26	93	65	204	76	117	194	231.5
φ 10×100	26	118	90	254	101	142	244	281.5

## Dimensional features

● **GMB TYPE**

Type φ 16 × 25



DA

DP

DS

DQ

DB

DN

BN

ST

NT

DU

DJ

TA

GP

GS

GM

GT

RT

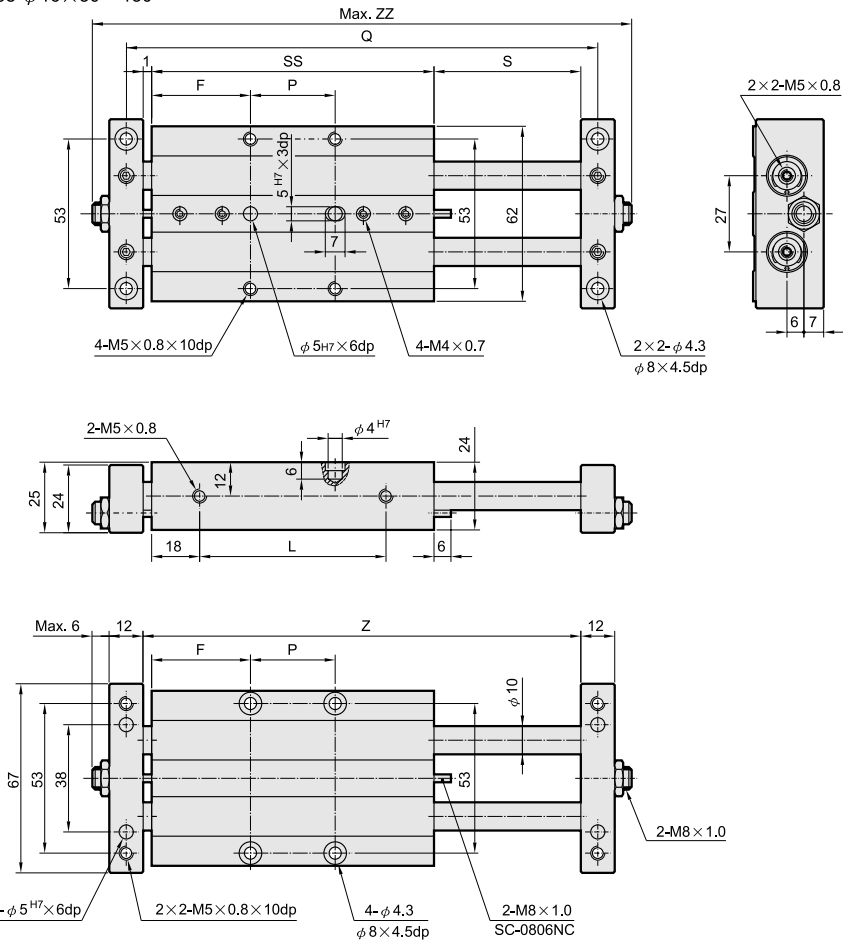
CT

CH

## Dimensional features

### ● GMB TYPE

Type φ 16 × 50 ~ 150



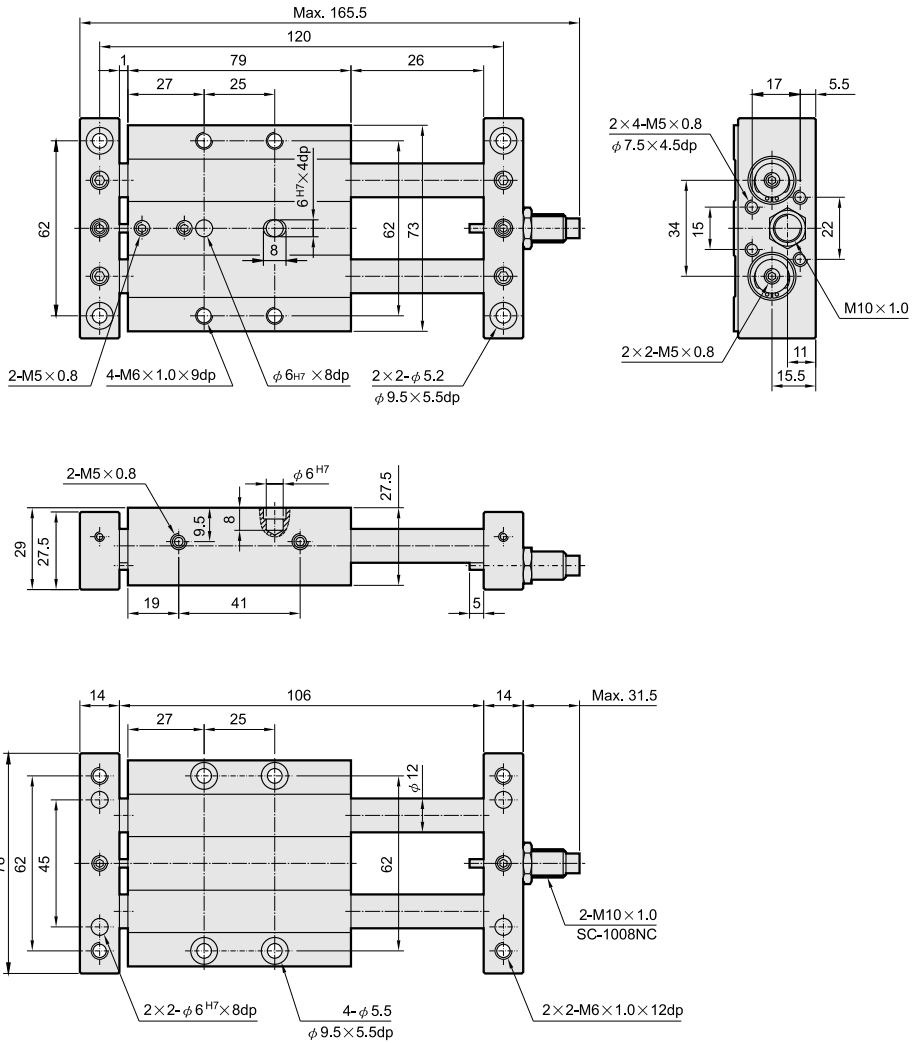
### Dimensional Table

Type	F	L	P	Q	S	SS	Z	ZZ
φ 16 × 50	35	64	30	164	51	100	152	188
φ 16 × 75	32.5	89	60	214	76	125	202	238
φ 16 × 100	37.5	114	75	264	101	150	252	288
φ 16 × 125	42.5	139	90	314	126	175	302	338
φ 16 × 150	55	164	90	364	151	200	352	388

## Dimensional features

● **GMB TYPE**

Type φ 20 × 25



DA

DP

DS

DQ

DB

DN

BN

ST

NT

DU

DJ

TA

GP

GS

GM

GT

RT

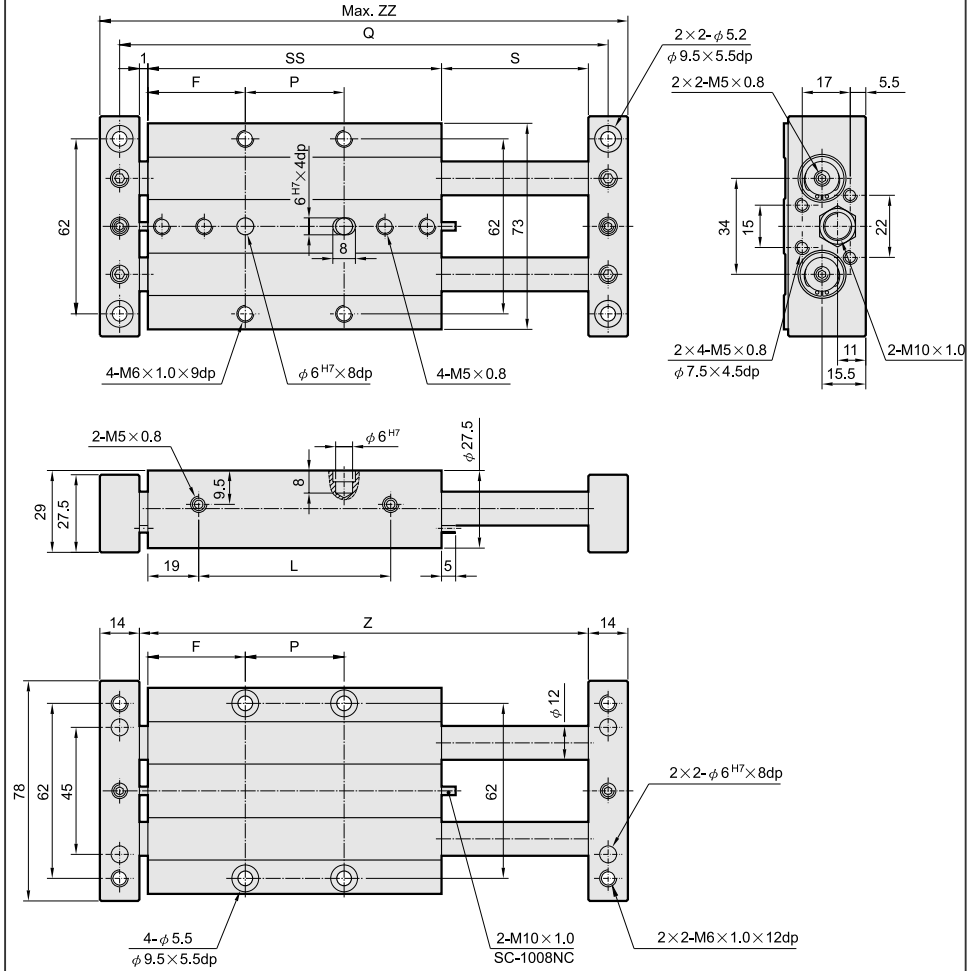
CT

CH

## Dimensional features

### ● GMB TYPE

Type φ 20×50 ~ 150



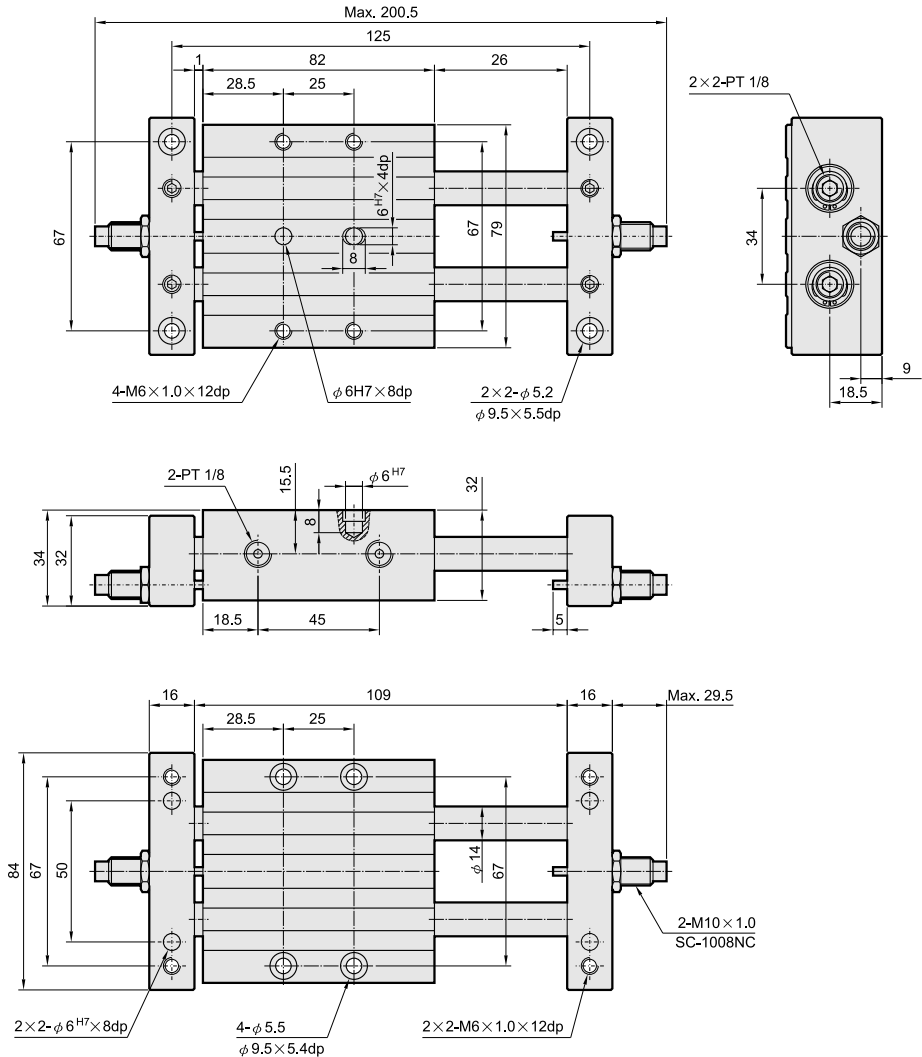
### Dimensional Table

Type	F	L	P	Q	S	SS	Z	ZZ
φ 20×50	34.5	66	35	170	51	104	156	184
φ 20×75	34.5	91	60	220	76	129	206	234
φ 20×100	39.5	116	75	270	101	154	256	284
φ 20×125	44.5	141	90	320	126	179	306	334
φ 20×150	57	166	90	370	151	204	356	384

## Dimensional features

● **GMB TYPE**

Type φ 25 × 25



DA

DP

DS

DQ

DB

DN

BN

ST

NT

DU

DJ

TA

GP

GS

GM

GT

RT

CT

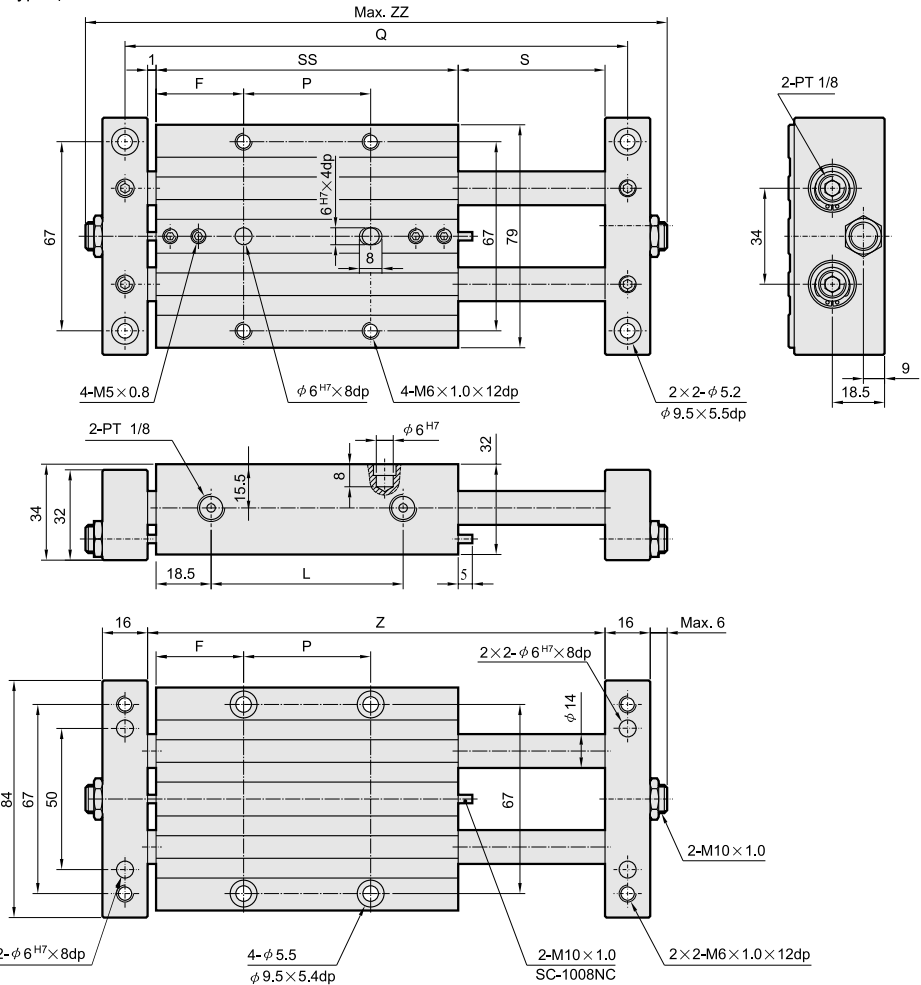
CH



## Dimensional features

### ● GMB TYPE

Type φ 25 × 50 ~ 150



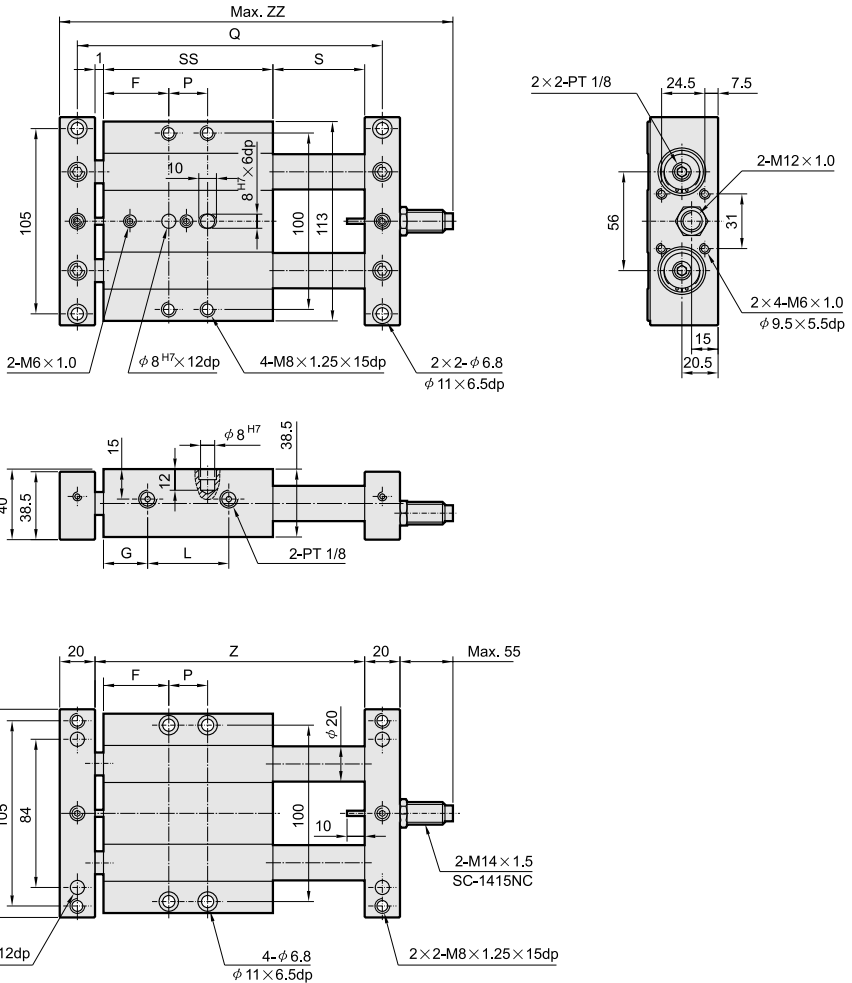
### Dimensional Table

Type	F	L	P	Q	S	SS	Z	ZZ
φ 25 × 50	31	70	45	175	51	107	159	203
φ 25 × 75	33.5	95	65	225	76	132	209	253
φ 25 × 100	33.5	120	90	275	101	157	259	303
φ 25 × 125	46	145	90	325	126	182	309	353
φ 25 × 150	58.5	170	90	375	151	207	359	403

## Dimensional features

### ● GMB TYPE

Type φ 32 × 25 ~ 75



DA

DP

DS

DQ

DB

DN

BN

ST

NT

DU

DJ

TA

GP

GS

GM

GT

RT

CT

CH

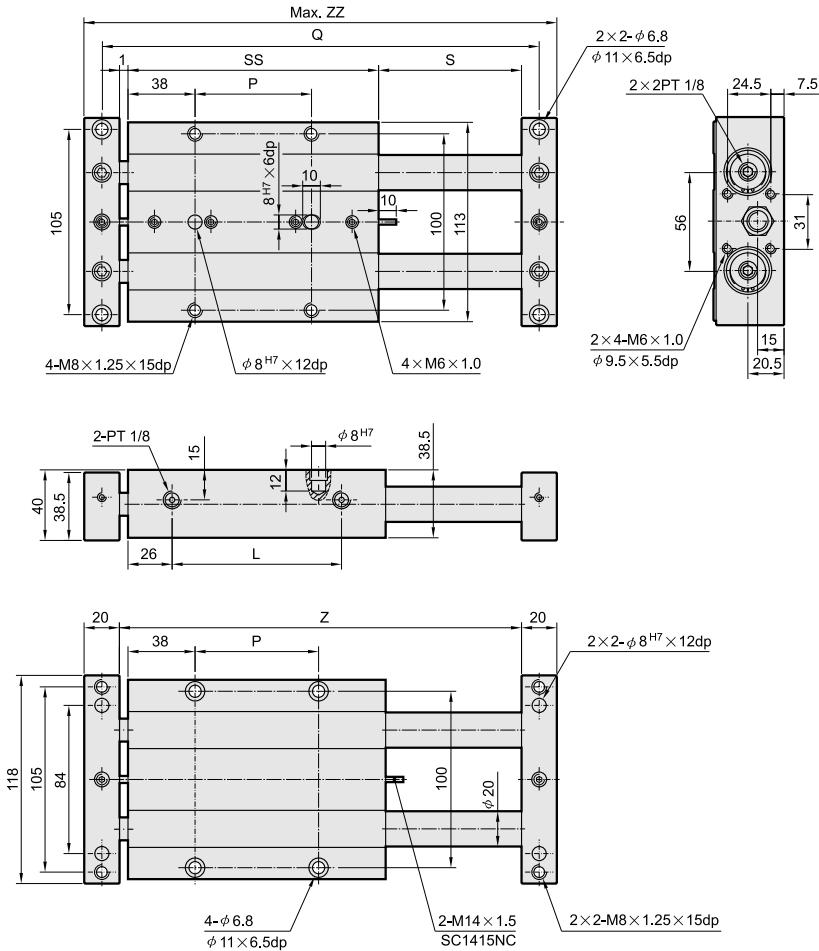
### Dimensional Table

Type	F	L	P	Q	S	SS	G	Z	ZZ
φ 32 × 25	37	44	22	143	26	96	26	123	219
φ 32 × 50	38	69	45	193	51	121	26	173	269
φ 32 × 75	38	94	70	243	76	146	26	223	319

## Dimensional features

### ● GMB TYPE

Type φ 32 × 100 ~ 150

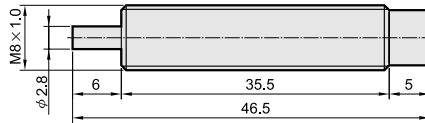


### Dimensional Table

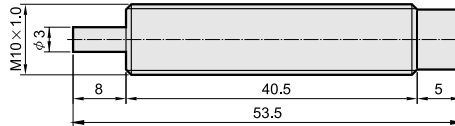
Type	L	P	Q	S	SS	Z	ZZ
φ 32 × 100	119	95	293	101	171	273	313
φ 32 × 125	144	120	343	126	196	323	363
φ 32 × 150	169	145	393	151	221	373	413

## Shock Absorbers

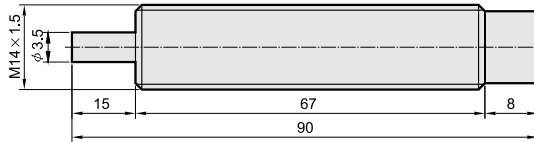
### ● SC-0806NC



### ● SC-1008NC



### ● SC-1415NC



Type	Stroke	Max. Energy Absorbed per cycle (ET)	Max. Nm Per Hour (ETC)	Max. Effective mass (Kg)	Max. Impact Speed (V)M/S	Operating Temperature (°C)	Weight (g)
SC-0806NC	6	1.8	2400	10	1.2	-10~70	14
SC-1008NC	8	3.2	5760	10	1.5	-10~70	26
SC-1415NC	15	20	36000	20	1.5	-10~70	95

## Installation of sensor switches

● Sensor holder

LN09D

Stroke	25	50	75	100	125	150	
Bore	L						P
φ 10	112	162	212	262			58
φ 16	122	172	222	272	322	372	73
φ 20	128	178	228	278	328	378	84
φ 25	133	183	233	283	333	383	90
φ 32	151	201	251	301	351	401	124

- DA
- DP
- DS
- DQ
- DB
- DN
- BN
- ST
- NT
- DU
- DJ
- TA
- GP
- GS
- GM
- GT
- RT
- CT
- CH